



# Morecambe Offshore Windfarm: Generation Assets Environmental Statement

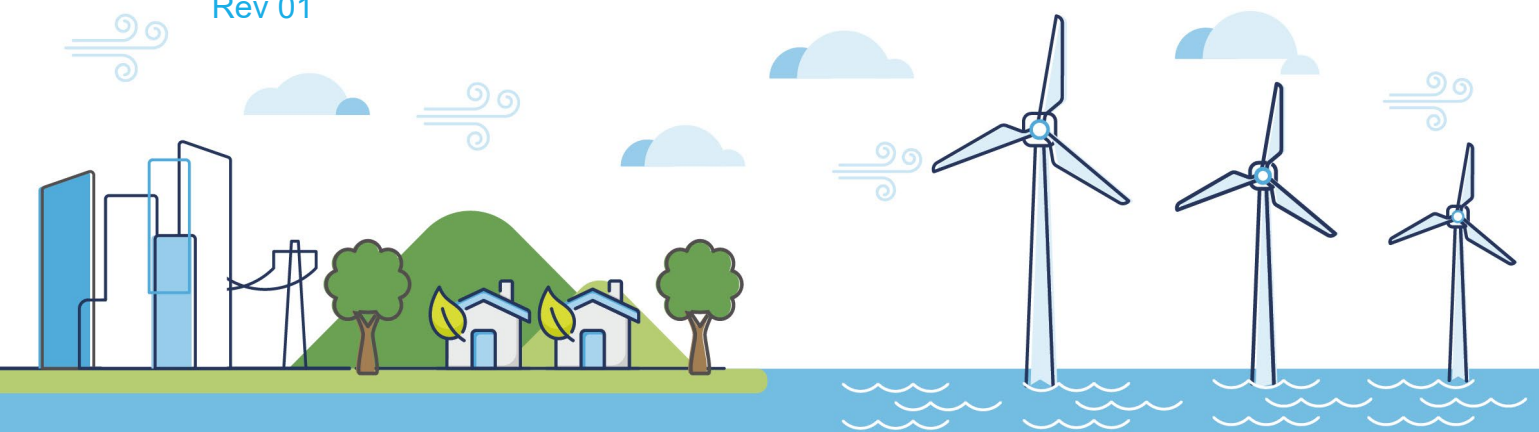
## Volume 5

### Chapter 18 SLVIA Figures (Part 20 of 34)

PINS Document Reference: 5.3.18.20

APFP Regulation: 5(2)(a)

Rev 01

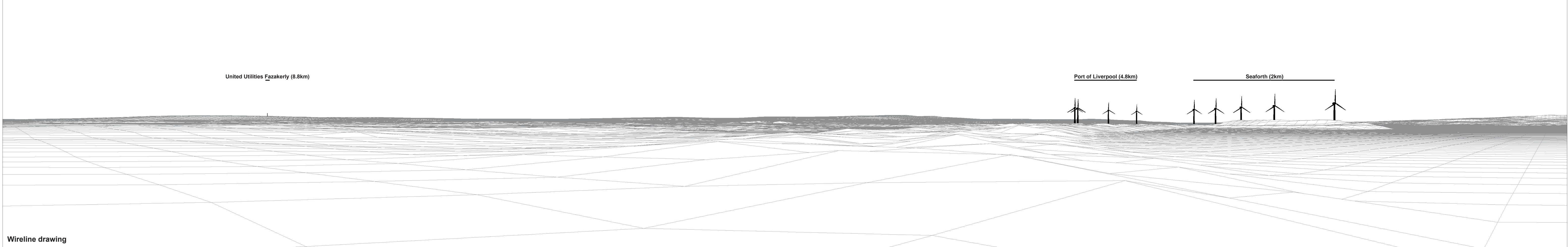


## Document History

|                        |                             |                 |          |
|------------------------|-----------------------------|-----------------|----------|
| <b>Doc No</b>          | MOR001-FLO-CON-ENV-FIG-1180 | <b>Rev</b>      | 01       |
| <b>Alt Doc No</b>      | PC1165-RHD-ES-XX-DG-Z-0018  |                 |          |
| <b>Document Status</b> | Approved for Use            | <b>Doc Date</b> | May 2024 |
| <b>PINS Doc Ref</b>    | 5.3.18.20                   | <b>APFP Ref</b> | 5(2)(a)  |

| <b>Rev</b> | <b>Date</b> | <b>Doc Status</b> | <b>Originator</b>  | <b>Reviewer</b>                 | <b>Approver</b>                 | <b>Modifications</b> |
|------------|-------------|-------------------|--------------------|---------------------------------|---------------------------------|----------------------|
| 01         | May 2024    | Approved for Use  | Royal HaskoningDHV | Morecambe Offshore Windfarm Ltd | Morecambe Offshore Windfarm Ltd | n/a                  |





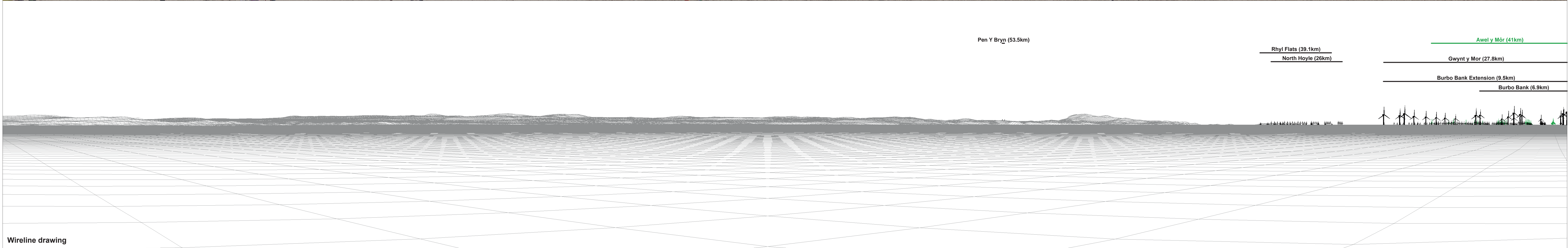
|                           |                   |                                  |                              |                       |                      |
|---------------------------|-------------------|----------------------------------|------------------------------|-----------------------|----------------------|
| <b>OS reference:</b>      | 330655 E 398855 N | <b>Horizontal field of view:</b> | 90° (cylindrical projection) | <b>Camera:</b>        | Canon EOS 5D Mark II |
| <b>Eye level:</b>         | 12.86 m AOD       | <b>Principal distance</b>        | 522 mm                       | <b>Lens:</b>          | EF50mm f/1.4 USM     |
| <b>Direction of view:</b> | 136°              |                                  |                              | <b>Camera height:</b> | 1.5 m AGL            |
| <b>Nearest turbine:</b>   | 43.071 km         |                                  |                              | <b>Date and time:</b> | 08/08/2022, 14:14    |

**Figure: 18:37b**  
**Viewpoint 14: Crosby Beach**



Baseline photograph

This image provides landscape and visual context only



Wireline drawing

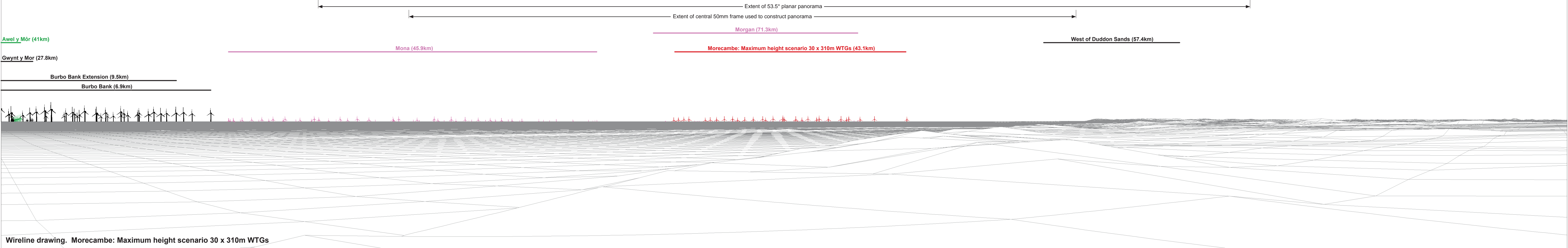
Figure: 18:37c  
Viewpoint 14: Crosby Beach

|                           |                   |                                  |                              |                       |                      |
|---------------------------|-------------------|----------------------------------|------------------------------|-----------------------|----------------------|
| <b>OS reference:</b>      | 330655 E 398855 N | <b>Horizontal field of view:</b> | 90° (cylindrical projection) | <b>Camera:</b>        | Canon EOS 5D Mark II |
| <b>Eye level:</b>         | 12.86 m AOD       | <b>Principal distance:</b>       | 522 mm                       | <b>Lens:</b>          | EF50mm f/1.4 USM     |
| <b>Direction of view:</b> | 226°              |                                  |                              | <b>Camera height:</b> | 1.5 m AGL            |
| <b>Nearest turbine:</b>   | 43.071 km         |                                  |                              | <b>Date and time:</b> | 08/08/2022, 14:14    |



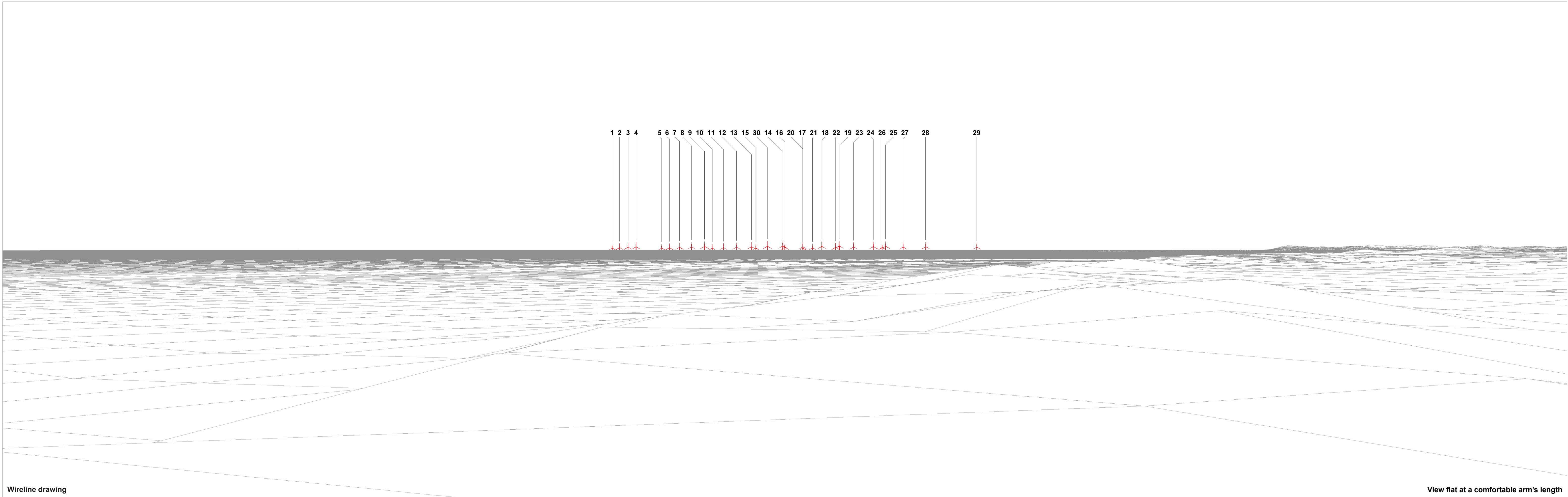
Baseline photograph

This image provides landscape and visual context only



|                    |                   |                           |                              |                |                      |
|--------------------|-------------------|---------------------------|------------------------------|----------------|----------------------|
| OS reference:      | 330655 E 398855 N | Horizontal field of view: | 90° (cylindrical projection) | Camera:        | Canon EOS 5D Mark II |
| Eye level:         | 12.86 m AOD       | Principal distance:       | 522 mm                       | Lens:          | EF50mm f/1.4 USM     |
| Direction of view: | 316°              |                           |                              | Camera height: | 1.5 m AGL            |
| Nearest turbine:   | 43.071 km         |                           |                              | Date and time: | 08/08/2022, 14:14    |

Figure: 18:37d  
Viewpoint 14: Crosby Beach



Wireline drawing

View flat at a comfortable arm's length

|  |  |   |  |
|--|--|---|--|
| <b>OS reference:</b> 330655 E 398855 N | <b>Horizontal field of view:</b> 53.5° (planar projection) | <b>Camera:</b> Canon EOS 5D Mark II     | <b>Figure: 18:37e</b><br><b>Viewpoint 14: Crosby Beach</b> |
| <b>Eye level:</b> 12.86 m AOD          | <b>Principal distance:</b> 812.5 mm                        | <b>Lens:</b> EF50mm f/1.4 USM           |  |
| <b>Direction of view:</b> 316°         | <b>Paper size:</b> 841 x 297 mm (half A1)                  | <b>Camera height:</b> 1.5 m AGL         |  |
| <b>Nearest turbine:</b> 43.071 km      | <b>Correct printed image size:</b> 820 x 260 mm            | <b>Date and time:</b> 08/08/2022, 14:14 |  |



Baseline Photograph

View flat at a comfortable arm's length

|  |  |   |
|--|--|---|
| <b>OS reference:</b> 330655 E 398855 N | <b>Horizontal field of view:</b> 53.5° (planar projection) | <b>Camera:</b> Canon EOS 5D Mark II     |
| <b>Eye level:</b> 12.86 m AOD          | <b>Principal distance:</b> 812.5 mm                        | <b>Lens:</b> EF50mm f/1.4 USM           |
| <b>Direction of view:</b> 316°         | <b>Paper size:</b> 841 x 297 mm (half A1)                  | <b>Camera height:</b> 1.5 m AGL         |
| <b>Nearest turbine:</b> 43.071 km      | <b>Correct printed image size:</b> 820 x 260 mm            | <b>Date and time:</b> 08/08/2022, 14:14 |

**Figure: 18:37f**  
**Viewpoint 14: Crosby Beach**





Photomontage

View flat at a comfortable arm's length

|  |  |   |
|--|--|---|
| <b>OS reference:</b> 330655 E 398855 N | <b>Horizontal field of view:</b> 53.5° (planar projection) | <b>Camera:</b> Canon EOS 5D Mark II     |
| <b>Eye level:</b> 12.86 m AOD          | <b>Principal distance:</b> 812.5 mm                        | <b>Lens:</b> EF50mm f/1.4 USM           |
| <b>Direction of view:</b> 316°         | <b>Paper size:</b> 841 x 297 mm (half A1)                  | <b>Camera height:</b> 1.5 m AGL         |
| <b>Nearest turbine:</b> 43.071 km      | <b>Correct printed image size:</b> 820 x 260 mm            | <b>Date and time:</b> 08/08/2022, 14:14 |

**Figure: 18:37g**  
**Viewpoint 14: Crosby Beach**